

Anti-Acetyl-Histone H2B-Lys21 antibody (21 aa) (STJ98687)

GENERAL INFORMATION

Product Type	Primary antibodies
Applications	WB/ELISA
Host / Source	Rabbit
Reactivity	Human/Rat/Mouse

PRODUCT PROPERTIES

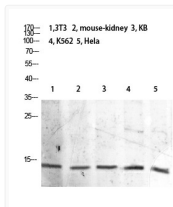
Clonality	Polyclonal
Concentration	1 mg/mL
Conjugation	Unconjugated
Purification	The antibody was affinity-purified from rabbit antiserum by affinity-chromatography using epitope-specific immunogen.
Dilution Range	WB 1:500-2000 ELISA 1:10000-20000
Formulation	Liquid in PBS containing 50% Glycerol, 0.5% BSA and 0.02% Sodium Azide.
Isotype	IgG
Molecular Weight	Observed: 15kD
Storage Instruction	Store at -20°C for up to 1 year from the date of receipt, and avoid repeat freeze-thaw cycles.

TARGET INFORMATION

Gene ID	3017/8339/8343/8344/8346/8347 255626 H2BC4.H2BC6.H2BC7.H2BC8.H2BC10 H2BC1
UniProt ID	H2B1C_HUMAN H2B1A_HUMAN H2B1B_HUMAN
Immunogen Region	21 aa
Specificity	The antibody detects endogenous Histone H2B when Acetyl occurs at Lys21

ADDITIONAL INFORMATION

Note STRICTLY FOR FURTHER SCIENTIFIC RESEARCH USE ONLY (RUO). MUST NOT TO BE USED IN DIAGNOSTIC OR THERAPEUTIC APPLICATIONS.



Western blot analysis of 3T3 mouse-kidney KB K562 Hela lysate, antibody was diluted at 2000. Secondary antibody was diluted at 1:20000