

Anti-Phospho-VIM-Tyr38 antibody (STJ98572)

GENERAL INFORMATION

Product Type	Primary antibodies
Applications	WB/ELISA
Host / Source	Rabbit
Reactivity	Human/Mouse/Rat

PRODUCT PROPERTIES

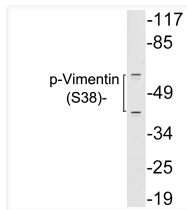
Clonality	Polyclonal
Concentration	1 mg/mL
Conjugation	Unconjugated
Purification	The antibody was affinity-purified from rabbit serum by affinity-chromatography using specific immunogen.
Dilution Range	WB 1:500-10000 ELISA 1:10000
Formulation	Liquid in PBS pH7.4, 0.02% Sodium Azide and 50% Glycerol.
Isotype	IgG
Molecular Weight	Observed: 51kD
Storage Instruction	Store at -20°C for up to 1 year from the date of receipt, and avoid repeat freeze-thaw cycles.

TARGET INFORMATION

Gene ID	7431
Gene Symbol	VIM
UniProt ID	VIME_HUMAN
Specificity	This antibody detects endogenous levels of Vimentin at Human:Y38;Mouse:Y38;Rat:Y38. It doesn't react with total protein.

ADDITIONAL INFORMATION

Note STRICTLY FOR FURTHER SCIENTIFIC RESEARCH USE ONLY (RUO). MUST NOT TO BE USED IN DIAGNOSTIC OR THERAPEUTIC APPLICATIONS.



Western blot analysis of lysates from 293 cells treated with paclitaxel, using p-Vimentin (Phospho-Ser38) antibody.



Western blot analysis of HELA cells using p-Vimentin antibody diluted at 500. Secondary antibody was diluted at 1:20000