

Anti-CRTC1 antibody (N-Term) (STJ98565)

GENERAL INFORMATION

Product Type	Primary antibodies
Applications	WB/FC/IF
Host / Source	Mouse
Reactivity	Human/Mouse/Rat/Pig

PRODUCT PROPERTIES

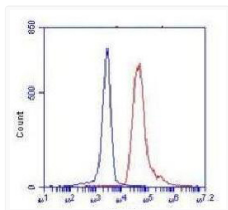
Clonality	Monoclonal
Concentration	1 mg/mL
Conjugation	Unconjugated
Purification	Affinity purification
Dilution Range	WB 1:1000-1:2000 FC 1:100-1:200 IF 1:100-1:500
Formulation	Liquid in 0.1M Tris-Glycine (pH7.4, 150 mM NaCl) , 0.2% Sodium Azide and 50% Glycerol.
Molecular Weight	Calculated: 67kD
Storage Instruction	Store at -20°C for up to 1 year from the date of receipt, and avoid repeat freeze-thaw cycles.

TARGET INFORMATION

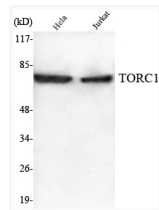
Gene ID	23373
Gene Symbol	CRTC1
UniProt ID	CRTC1_HUMAN
Immunogen Region	N-Term
Specificity	TORC1 Monoclonal Antibody detects endogenous levels of TORC1 protein.

ADDITIONAL INFORMATION

Note **STRICTLY FOR FURTHER SCIENTIFIC RESEARCH USE ONLY (RUO). MUST NOT TO BE USED IN DIAGNOSTIC OR THERAPEUTIC APPLICATIONS.**



Flow cytometric analysis of K562 cells stained with TORC1 monoclonal antibody (red) , followed by FITC-conjugated goat anti-mouse IgG. Blue line histogram represents the isotype control, normal mouse IgG.



Western blot analysis using TORC1 monoclonal antibody against HeLa, Jurkat cell lysate.