

Anti-TBL1Y antibody (STJ98559)

GENERAL INFORMATION

| | |
|---------------|-------------------------|
| Product Type | Primary antibodies |
| Applications | WB |
| Host / Source | Mouse |
| Reactivity | Human/Mouse/Rat/Dog/Pig |

PRODUCT PROPERTIES

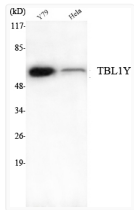
| | |
|---------------------|--|
| Clonality | Monoclonal |
| Concentration | 1 mg/mL |
| Conjugation | Unconjugated |
| Purification | Affinity purification |
| Dilution Range | WB 1:1000-1:2000 |
| Formulation | Liquid in 0.1M Tris-Glycine (pH7.4, 150 mM NaCl) , 0.2% Sodium Azide and 50% Glycerol. |
| Molecular Weight | Calculated: 57kD |
| Storage Instruction | Store at -20°C for up to 1 year from the date of receipt, and avoid repeat freeze-thaw cycles. |

TARGET INFORMATION

| | |
|-------------|---|
| Gene ID | 90665 |
| Gene Symbol | TBL1Y |
| UniProt ID | TBL1Y_HUMAN |
| Specificity | TBL1Y Monoclonal Antibody detects endogenous levels of TBL1Y protein. |

ADDITIONAL INFORMATION

Note **STRICTLY FOR FURTHER SCIENTIFIC RESEARCH USE ONLY (RUO). MUST NOT TO BE USED IN DIAGNOSTIC OR THERAPEUTIC APPLICATIONS.**



Western blot analysis using TBL1Y monoclonal antibody against Y79, HeLa cell lysate.