

Anti-PPP2CA antibody (N-Term) (STJ98535)

GENERAL INFORMATION

Product Type	Primary antibodies
Applications	WB/IF
Host / Source	Mouse
Reactivity	Human/Mouse/Cow/Chicken/Dog/Pig/Rabbit/Zebrafish

PRODUCT PROPERTIES

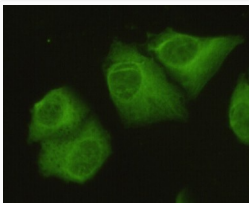
Clonality	Monoclonal
Concentration	1 mg/mL
Conjugation	Unconjugated
Purification	Affinity purification
Dilution Range	WB 1:1000-1:2000 IF 1:100-1:500
Formulation	Liquid in 0.1M Tris-Glycine (pH7.4, 150 mM NaCl) , 0.2% Sodium Azide and 50% Glycerol.
Molecular Weight	Calculated: 36kD
Storage Instruction	Store at -20°C for up to 1 year from the date of receipt, and avoid repeat freeze-thaw cycles.

TARGET INFORMATION

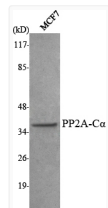
Gene ID	5515
Gene Symbol	PPP2CA
UniProt ID	PP2AA_HUMAN
Immunogen Region	N-Term
Specificity	PP2A-C Alpha Monoclonal Antibody detects endogenous levels of PP2A-C Alpha protein.

ADDITIONAL INFORMATION

Note STRICTLY FOR FURTHER SCIENTIFIC RESEARCH USE ONLY (RUO). MUST NOT TO BE USED IN DIAGNOSTIC OR THERAPEUTIC APPLICATIONS.



Immunofluorescence analysis of HeLa cells using PP2A-C Alpha monoclonal antibody.



Western blot analysis using PP2A-C Alpha monoclonal antibody against MCF7 cell lysate.