

## Anti-KDM1A antibody (N-Term) (STJ98515)

### GENERAL INFORMATION

Product Type	Primary antibodies
Applications	WB/IHC/IF
Host / Source	Mouse
Reactivity	Human/Mouse/Cow/Dog/Pig

### PRODUCT PROPERTIES

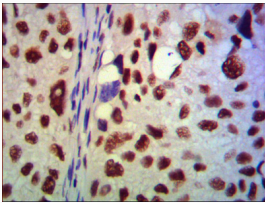
Clonality	Monoclonal
Concentration	1 mg/mL
Conjugation	Unconjugated
Purification	Affinity purification
Dilution Range	WB 1:1000-1:2000 IHC 1:500-1:1000 IF 1:100-1:500
Formulation	Liquid in 0.1M Tris-Glycine (pH7.4, 150 mM NaCl) , 0.2% Sodium Azide and 50% Glycerol.
Molecular Weight	Calculated: 93kD
Storage Instruction	Store at -20°C for up to 1 year from the date of receipt, and avoid repeat freeze-thaw cycles.

### TARGET INFORMATION

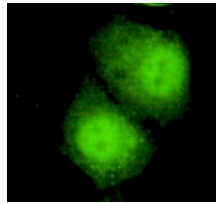
Gene ID	<a href="#">23028</a>
Gene Symbol	<a href="#">KDM1A</a>
UniProt ID	<a href="#">KDM1A_HUMAN</a>
Immunogen Region	N-Term
Specificity	LSD1 Monoclonal Antibody detects endogenous levels of LSD1 protein.

### ADDITIONAL INFORMATION

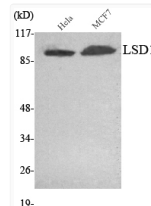
Note STRICTLY FOR FURTHER SCIENTIFIC RESEARCH USE ONLY (RUO). MUST NOT TO BE USED IN DIAGNOSTIC OR THERAPEUTIC APPLICATIONS.



Immunohistochemistry analysis of paraffin-embedded human lung cancer using LSD1 monoclonal antibody.



Immunofluorescence analysis of HeLa cells using LSD1 monoclonal antibody.



Western blot analysis using LSD1 monoclonal antibody against HeLa, MCF7 cell lysate.