

Anti-NPM1 antibody (STJ98470)

GENERAL INFORMATION

Product Type	Primary antibodies
Applications	WB/IF
Host / Source	Mouse
Reactivity	Human/Mouse/Rat/Cow/Pig/Rabbit

PRODUCT PROPERTIES

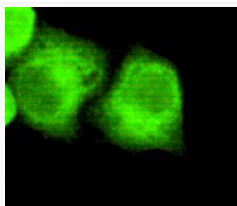
Clonality	Monoclonal
Concentration	1 mg/mL
Conjugation	Unconjugated
Purification	Affinity purification
Dilution Range	WB 1:1000-1:2000 IF 1:100-1:500
Formulation	Liquid in 0.1M Tris-Glycine (pH7.4, 150 mM NaCl) , 0.2% Sodium Azide and 50% Glycerol.
Molecular Weight	Calculated: 33kD
Storage Instruction	Store at -20°C for up to 1 year from the date of receipt, and avoid repeat freeze-thaw cycles.

TARGET INFORMATION

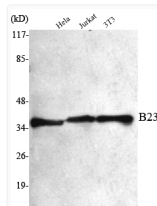
Gene ID	4869
Gene Symbol	NPM1
UniProt ID	NPM_HUMAN
Specificity	B23 Monoclonal Antibody detects endogenous levels of B23 protein.

ADDITIONAL INFORMATION

Note STRICTLY FOR FURTHER SCIENTIFIC RESEARCH USE ONLY (RUO). MUST NOT TO BE USED IN DIAGNOSTIC OR THERAPEUTIC APPLICATIONS.



Immunofluorescence analysis of HeLa cells using B23 monoclonal antibody.



Western blot analysis using B23 monoclonal antibody against HeLa, Jurkat, 3T3 cell lysate.