

Anti-UBE2I antibody [1B10] (STJ98444)

GENERAL INFORMATION

Product Type	Primary antibodies
Applications	WB/IHC/IF/FC/ELISA
Host / Source	Mouse
Reactivity	Human

PRODUCT PROPERTIES

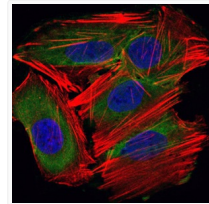
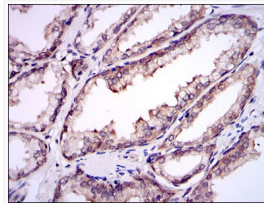
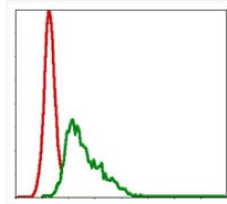
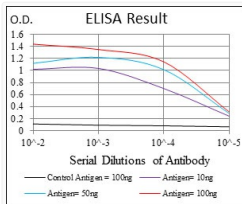
Clonality	Monoclonal
Conjugation	Unconjugated
Purification	Affinity purification
Dilution Range	WB 1:500-1:2000 IHC 1:200-1:1000 IF 1:200-1:1000 FC 1:200-1:400 ELISA 1:10000
Formulation	Liquid in PBS containing 0.03% Sodium Azide, 0.5% BSA, 50% Glycerol.
Isotype	IgG1
Molecular Weight	Calculated: 18kD
Storage Instruction	Store at -20°C for up to 1 year from the date of receipt, and avoid repeat freeze-thaw cycles.

TARGET INFORMATION

Gene ID	7329
Gene Symbol	UBE2I
UniProt ID	UBC9_HUMAN
Specificity	UBC9 Monoclonal Antibody detects endogenous levels of UBC9 protein.

ADDITIONAL INFORMATION

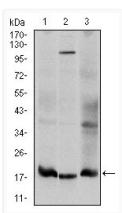
Note STRICTLY FOR FURTHER SCIENTIFIC RESEARCH USE ONLY (RUO). MUST NOT TO BE USED IN DIAGNOSTIC OR THERAPEUTIC APPLICATIONS.



Flow cytometric analysis of HepG2 cells using UBC9 monoclonal antibody (green) and negative control (red).

Immunohistochemistry analysis of paraffin-embedded prostate tissues with DAB staining using UBC9 monoclonal antibody.

Immunofluorescence analysis of HepG2 cells using UBC9 monoclonal antibody (green). Blue: DRAQ5 fluorescent DNA dye. Red: Actin filaments have been labeled with Alexa Fluor-555 phalloidin.



Western blot analysis using UBC9 monoclonal antibody against HeLa (1), HepG2 (2), and Cos7 (3) cell lysate.