

Anti-CRTC1 antibody [1B5] (STJ98426)

GENERAL INFORMATION

Product Type	Primary antibodies
Applications	WB/IF/FC/ELISA
Host / Source	Mouse
Reactivity	Human

PRODUCT PROPERTIES

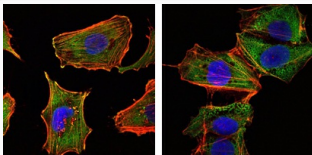
Clonality	Monoclonal
Conjugation	Unconjugated
Purification	Affinity purification
Dilution Range	WB 1:500-1:2000 IF 1:200-1:1000 FC 1:200-1:400 ELISA 1:10000
Formulation	Liquid in PBS containing 0.03% Sodium Azide, 0.5% BSA, 50% Glycerol.
Isotype	IgG1
Molecular Weight	Calculated: 67kD
Storage Instruction	Store at -20°C for up to 1 year from the date of receipt, and avoid repeat freeze-thaw cycles.

TARGET INFORMATION

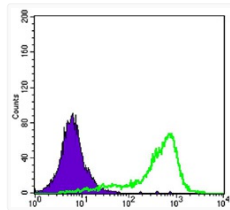
Gene ID	23373
Gene Symbol	CRTC1
UniProt ID	CRTC1_HUMAN
Specificity	TORC1 Monoclonal Antibody detects endogenous levels of TORC1 protein.

ADDITIONAL INFORMATION

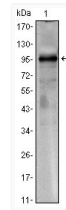
Note **STRICTLY FOR FURTHER SCIENTIFIC RESEARCH USE ONLY (RUO). MUST NOT TO BE USED IN DIAGNOSTIC OR THERAPEUTIC APPLICATIONS.**



Immunofluorescence analysis of U251 (left) and NTERA2 (right) cells using TORC1 monoclonal antibody (green). Red: Actin filaments have been labeled with DY-554 phalloidin. Blue: DRAQ5 fluorescent DNA dye.



Flow cytometric analysis of K562 cells using TORC1 monoclonal antibody (green) and negative control (purple).



Western blot analysis using TORC1 monoclonal antibody against CRTC1-hlgGfc transfected HEK293 cell lysate.