

Anti-SRA1 antibody [1D4H8] (STJ98397)

GENERAL INFORMATION

Product Type	Primary antibodies
Applications	WB/IHC/IF/ELISA
Host / Source	Mouse
Reactivity	Human

PRODUCT PROPERTIES

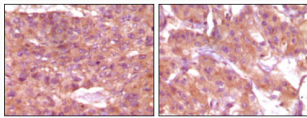
Clonality	Monoclonal
Conjugation	Unconjugated
Purification	Affinity purification
Dilution Range	WB 1:500-1:2000 IHC 1:200-1:1000 ELISA 1:10000 IF 1:50-200
Formulation	Liquid in PBS containing 0.03% Sodium Azide, 0.5% BSA, 50% Glycerol.
Isotype	IgG1
Molecular Weight	Calculated: 24kD
Storage Instruction	Store at -20°C for up to 1 year from the date of receipt, and avoid repeat freeze-thaw cycles.

TARGET INFORMATION

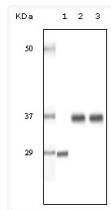
Gene ID	10011
Gene Symbol	SRA1
UniProt ID	SRA1_HUMAN
Specificity	SRA1 Monoclonal Antibody detects endogenous levels of SRA1 protein.

ADDITIONAL INFORMATION

Note **STRICTLY FOR FURTHER SCIENTIFIC RESEARCH USE ONLY (RUO). MUST NOT TO BE USED IN DIAGNOSTIC OR THERAPEUTIC APPLICATIONS.**



Immunohistochemistry analysis of paraffin-embedded human skin carcinoma (left) and breast carcinoma (right), showing cytoplasmic and membrane localization with DAB staining using SRA1 monoclonal antibody.



Western blot analysis using SRA1 monoclonal antibody against truncated SRA recombinant protein (1), human ovary cancer tissue lysate (2) and A431 cell lysate (3).