

Anti-SOD1 antibody [6F5] (STJ98392)

GENERAL INFORMATION

Product Type	Primary antibodies
Applications	WB/IF/FC/ELISA
Host / Source	Mouse
Reactivity	Human/Mouse

PRODUCT PROPERTIES

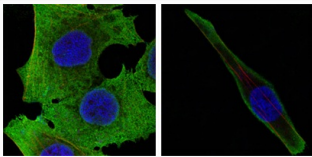
Clonality	Monoclonal
Conjugation	Unconjugated
Purification	Affinity purification
Dilution Range	WB 1:500-1:2000 IF 1:200-1:1000 FC 1:200-1:400 ELISA 1:10000
Formulation	Liquid in PBS containing 0.03% Sodium Azide, 0.5% BSA, 50% Glycerol.
Isotype	IgG1
Molecular Weight	Calculated: 16kD
Storage Instruction	Store at -20°C for up to 1 year from the date of receipt, and avoid repeat freeze-thaw cycles.

TARGET INFORMATION

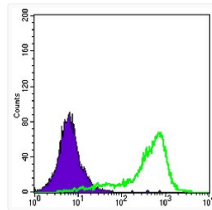
Gene ID	6647
Gene Symbol	SOD1
UniProt ID	SODC_HUMAN
Specificity	SOD-1 Monoclonal Antibody detects endogenous levels of SOD-1 protein.

ADDITIONAL INFORMATION

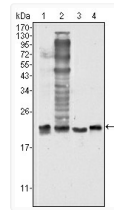
Note **STRICTLY FOR FURTHER SCIENTIFIC RESEARCH USE ONLY (RUO). MUST NOT TO BE USED IN DIAGNOSTIC OR THERAPEUTIC APPLICATIONS.**



Confocal immunofluorescence analysis of PANC-1 (left) and SKBR-3 (right) cells using SOD-1 monoclonal antibody (green). Red: Actin filaments have been labeled with DY-554 phalloidin. Blue: DRAQ5 fluorescent DNA dye.



Flow cytometric analysis of A431 cells using SOD-1 monoclonal antibody (green) and negative control (purple).



Western blot analysis using SOD-1 monoclonal antibody against HeLa (1), NIH/3T3 (2), A549 (3) and A431 (4) cell lysate.