

Anti-SNAI1 antibody [6D2] (STJ98391)

GENERAL INFORMATION

Product Type	Primary antibodies
Applications	WB/ELISA
Host / Source	Mouse
Reactivity	Human

PRODUCT PROPERTIES

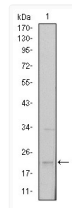
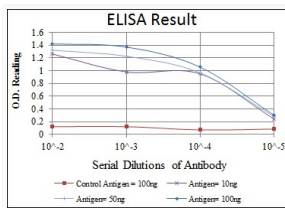
Clonality	Monoclonal
Conjugation	Unconjugated
Purification	Affinity purification
Dilution Range	WB 1:500-1:2000 ELISA 1:10000
Formulation	Liquid in PBS containing 0.03% Sodium Azide, 0.5% BSA, 50% Glycerol.
Isotype	IgG1
Molecular Weight	Calculated: 29kD
Storage Instruction	Store at -20°C for up to 1 year from the date of receipt, and avoid repeat freeze-thaw cycles.

TARGET INFORMATION

Gene ID	6615
Gene Symbol	SNAI1
UniProt ID	SNAI1_HUMAN
Specificity	SNAI 1 Monoclonal Antibody detects endogenous levels of SNAI 1 protein.

ADDITIONAL INFORMATION

Note **STRICTLY FOR FURTHER SCIENTIFIC RESEARCH USE ONLY (RUO). MUST NOT TO BE USED IN DIAGNOSTIC OR THERAPEUTIC APPLICATIONS.**



Western blot analysis using SNAI 1 monoclonal antibody against NTERA-2 cell lysate.