

Anti-SMN1/SMN2 antibody [5H1] (STJ98390)

GENERAL INFORMATION

Product Type	Primary antibodies
Applications	WB/IHC/IF/ELISA
Host / Source	Mouse
Reactivity	Human/Monkey

PRODUCT PROPERTIES

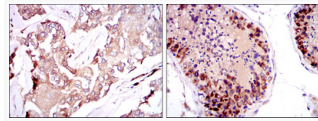
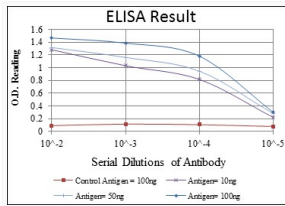
Clonality	Monoclonal
Conjugation	Unconjugated
Purification	Affinity purification
Dilution Range	WB 1:500-1:2000 IHC 1:200-1:1000 IF 1:200-1:1000 ELISA 1:10000
Formulation	Liquid in PBS containing 0.03% Sodium Azide, 0.5% BSA, 50% Glycerol.
Isotype	IgG1
Molecular Weight	Calculated: 32kD
Storage Instruction	Store at -20°C for up to 1 year from the date of receipt, and avoid repeat freeze-thaw cycles.

TARGET INFORMATION

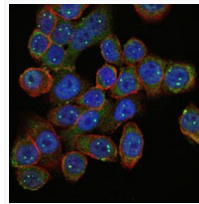
Gene ID	6606/6607
Gene Symbol	SMN1.SMN2
UniProt ID	SMN_HUMAN
Specificity	SMN1 Monoclonal Antibody detects endogenous levels of SMN1 protein.

ADDITIONAL INFORMATION

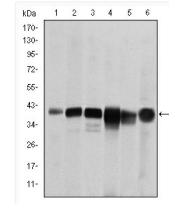
Note STRICTLY FOR FURTHER SCIENTIFIC RESEARCH USE ONLY (RUO). MUST NOT TO BE USED IN DIAGNOSTIC OR THERAPEUTIC APPLICATIONS.



Immunohistochemistry analysis of paraffin-embedded breast cancer tissues (left) and testis tissues (right) with DAB staining using SMN1 monoclonal antibody.



Immunofluorescence analysis of HepG2 cells using SMN1 monoclonal antibody (green). Blue: DRAQ5 fluorescent DNA dye. Red: Actin filaments.



Western blot analysis using SMN1 monoclonal antibody against RAJI (1), Cos7 (2), Jurkat (3), K562 (4), HeLa (5) and HepG2 (6) cell lysate. have been labeled with Alexa Fluor-555 phalloidin.