

Anti-SMAD2 antibody [5G7] (STJ98383)

GENERAL INFORMATION

Product Type	Primary antibodies
Applications	WB/IHC/IF/FC/ELISA
Host / Source	Mouse
Reactivity	Human

PRODUCT PROPERTIES

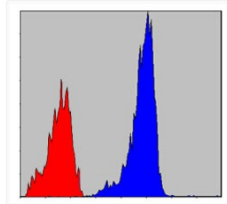
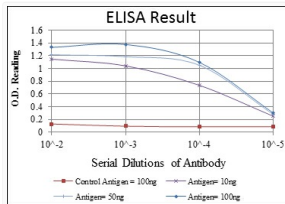
Clonality	Monoclonal
Conjugation	Unconjugated
Purification	Affinity purification
Dilution Range	WB 1:500-1:2000 IHC 1:200-1:1000 IF 1:200-1:1000 FC 1:200-1:400 ELISA 1:10000
Formulation	Liquid in PBS containing 0.03% Sodium Azide, 0.5% BSA, 50% Glycerol.
Isotype	IgG1
Molecular Weight	Calculated: 52kD
Storage Instruction	Store at -20°C for up to 1 year from the date of receipt, and avoid repeat freeze-thaw cycles.

TARGET INFORMATION

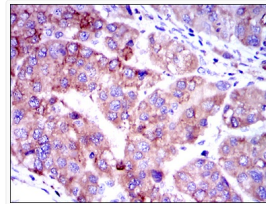
Gene ID	4087
Gene Symbol	SMAD2
UniProt ID	SMAD2_HUMAN
Specificity	Smad2 Monoclonal Antibody detects endogenous levels of Smad2 protein.

ADDITIONAL INFORMATION

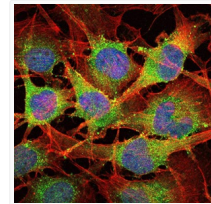
Note STRICTLY FOR FURTHER SCIENTIFIC RESEARCH USE ONLY (RUO). MUST NOT TO BE USED IN DIAGNOSTIC OR THERAPEUTIC APPLICATIONS.



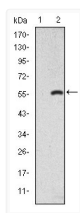
Flow cytometric analysis of NIH/3T3 cells using Smad2 monoclonal antibody (blue) and negative control (red).



Immunohistochemistry analysis of paraffin-embedded human liver cancer tissues with DAB staining using Smad2 monoclonal antibody.



Immunofluorescence analysis of U251 cells using Smad2 monoclonal antibody (green). Blue: DRAQ5 fluorescent DNA dye. Red: Actin filaments have been labeled with Alexa Fluor-555 phalloidin.



Western blot analysis using Smad2 monoclonal antibody against HEK293 (1) and SMAD2-hlgGfC transfected HEK293 (2) cell lysate.