

Anti-SIRT1 antibody [1F3] (STJ98380)

GENERAL INFORMATION

Product Type	Primary antibodies
Applications	WB/IHC/IF/FC/ELISA
Host / Source	Mouse
Reactivity	Human/Monkey

PRODUCT PROPERTIES

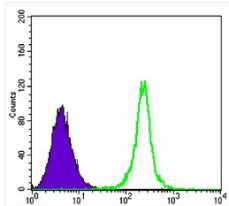
Clonality	Monoclonal
Conjugation	Unconjugated
Purification	Affinity purification
Dilution Range	WB 1:500-1:2000 IHC 1:200-1:1000 IF 1:200-1:1000 FC 1:200-1:400 ELISA 1:10000
Formulation	Liquid in PBS containing 0.03% Sodium Azide, 0.5% BSA, 50% Glycerol.
Isotype	IgG1
Molecular Weight	Calculated: 82kD
Storage Instruction	Store at -20°C for up to 1 year from the date of receipt, and avoid repeat freeze-thaw cycles.

TARGET INFORMATION

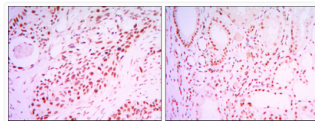
Gene ID	23411
Gene Symbol	SIRT1
UniProt ID	SIR1_HUMAN
Specificity	SIRT1 Monoclonal Antibody detects endogenous levels of SIRT1 protein.

ADDITIONAL INFORMATION

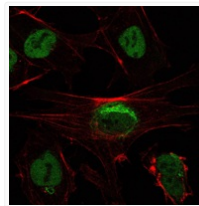
Note **STRICTLY FOR FURTHER SCIENTIFIC RESEARCH USE ONLY (RUO). MUST NOT TO BE USED IN DIAGNOSTIC OR THERAPEUTIC APPLICATIONS.**



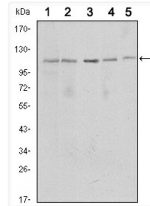
Flow cytometric analysis of K562 cells using SIRT1 monoclonal antibody (green) and negative control (purple).



Immunohistochemistry analysis of paraffin-embedded lung cancer tissues (left) and kidney cancer tissues (right) with DAB staining using SIRT1 monoclonal antibody.



Immunofluorescence analysis of NTERA-2 cells using SIRT1 monoclonal antibody (green). Red: Actin filaments have been labeled with Alexa Fluor-555 phalloidin.



Western blot analysis using SIRT1 monoclonal antibody against MCF-7 (1), Jurkat (2), HeLa (3), HEK293 (4) and A549 (5) cell lysate.