

## Anti-ZBTB16 antibody [5B3] (STJ98325)

### GENERAL INFORMATION

Product Type	Primary antibodies
Applications	WB/IF/ELISA
Host / Source	Mouse
Reactivity	Human

### PRODUCT PROPERTIES

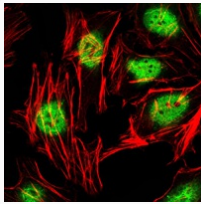
Clonality	Monoclonal
Conjugation	Unconjugated
Purification	Affinity purification
Dilution Range	WB 1:500-1:2000 IF 1:200-1:1000 ELISA 1:10000
Formulation	Liquid in PBS containing 0.03% Sodium Azide, 0.5% BSA, 50% Glycerol.
Isotype	IgG1
Molecular Weight	Calculated: 74kD
Storage Instruction	Store at -20°C for up to 1 year from the date of receipt, and avoid repeat freeze-thaw cycles.

### TARGET INFORMATION

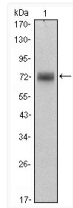
Gene ID	<a href="#">7704</a>
Gene Symbol	<a href="#">ZBTB16</a>
UniProt ID	<a href="#">ZBT16_HUMAN</a>
Specificity	PLZF Monoclonal Antibody detects endogenous levels of PLZF protein.

### ADDITIONAL INFORMATION

Note **STRICTLY FOR FURTHER SCIENTIFIC RESEARCH USE ONLY (RUO). MUST NOT TO BE USED IN DIAGNOSTIC OR THERAPEUTIC APPLICATIONS.**



Immunofluorescence analysis of HeLa cells using PLZF monoclonal antibody (green). Red: Actin filaments have been labeled with Alexa Fluor-555 phalloidin.



Western blot analysis using PLZF monoclonal antibody against HeLa (1) cell lysate.