

## Anti-RCHY1 antibody [1H10] (STJ98323)

### GENERAL INFORMATION

Product Type	Primary antibodies
Applications	WB/IHC/IF/FC/ELISA
Host / Source	Mouse
Reactivity	Human/Rat

### PRODUCT PROPERTIES

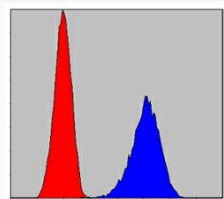
Clonality	Monoclonal
Conjugation	Unconjugated
Purification	Affinity purification
Dilution Range	WB 1:500-1:2000 IHC 1:200-1:1000 IF 1:200-1:1000 FC 1:200-1:400 ELISA 1:10000
Formulation	Liquid in PBS containing 0.03% Sodium Azide, 0.5% BSA, 50% Glycerol.
Isotype	IgG1
Molecular Weight	Calculated: 30kD
Storage Instruction	Store at -20°C for up to 1 year from the date of receipt, and avoid repeat freeze-thaw cycles.

### TARGET INFORMATION

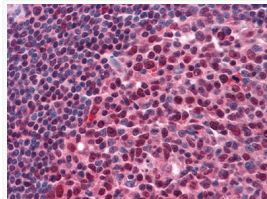
Gene ID	<a href="#">25898</a>
Gene Symbol	<a href="#">RCHY1</a>
UniProt ID	<a href="#">ZN363_HUMAN</a>
Specificity	Pirh2 Monoclonal Antibody detects endogenous levels of Pirh2 protein.

### ADDITIONAL INFORMATION

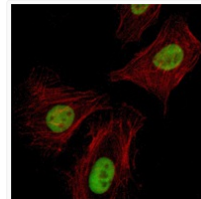
Note **STRICTLY FOR FURTHER SCIENTIFIC RESEARCH USE ONLY (RUO). MUST NOT TO BE USED IN DIAGNOSTIC OR THERAPEUTIC APPLICATIONS.**



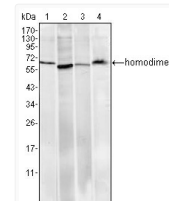
Flow cytometric analysis of PC-12 cells using Pirh2 monoclonal antibody (blue) and negative control (red).



Immunohistochemistry analysis of paraffin-embedded human Tonsil tissues with AEC staining using Pirh2 monoclonal antibody.



Immunofluorescence analysis of HeLa cells using Pirh2 monoclonal antibody (green). Red: Actin filaments have been labeled with Alexa Fluor-555 phalloidin.



Western blot analysis using Pirh2 monoclonal antibody against HeLa (1), A549 (2), MCF-7 (3) and PC-12 (4) cell lysate.