

Anti-MAPK11 antibody (251-363 aa) [4H6H6] (STJ98300)

GENERAL INFORMATION

Product Type	Primary antibodies
Applications	WB/ELISA
Host / Source	Mouse
Reactivity	Human

PRODUCT PROPERTIES

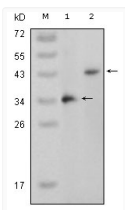
Clonality	Monoclonal
Conjugation	Unconjugated
Purification	Affinity purification
Dilution Range	WB 1:500-1:2000 ELISA 1:10000
Formulation	Liquid in PBS containing 0.03% Sodium Azide, 0.5% BSA, 50% Glycerol.
Isotype	IgG1
Molecular Weight	Calculated: 41kD
Storage Instruction	Store at -20°C for up to 1 year from the date of receipt, and avoid repeat freeze-thaw cycles.

TARGET INFORMATION

Gene ID	5600
Gene Symbol	MAPK11
UniProt ID	MK11_HUMAN
Immunogen Region	251-363 aa
Specificity	p38 Beta Monoclonal Antibody detects endogenous levels of p38 Beta protein.

ADDITIONAL INFORMATION

Note **STRICTLY FOR FURTHER SCIENTIFIC RESEARCH USE ONLY (RUO). MUST NOT TO BE USED IN DIAGNOSTIC OR THERAPEUTIC APPLICATIONS.**



Western blot analysis using p38 Beta monoclonal antibody against truncated p38 Beta recombinant protein (1) and full-length p38 Beta (aa1-363) - pcDNA3.1 transfected CHO-K1 cell lysate (2).