

Anti-NFKB1 antibody [5D10] (STJ98275)

GENERAL INFORMATION

Product Type	Primary antibodies
Applications	WB/IHC/IF/FC/ELISA
Host / Source	Mouse
Reactivity	Human

PRODUCT PROPERTIES

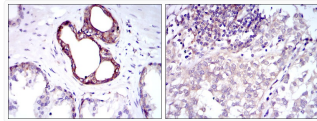
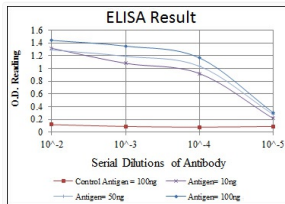
Clonality	Monoclonal
Conjugation	Unconjugated
Purification	Affinity purification
Dilution Range	WB 1:500-1:2000 IHC 1:200-1:1000 FC 1:200-1:400 ELISA 1:10000 IF 1:50-200
Formulation	Liquid in PBS containing 0.03% Sodium Azide, 0.5% BSA, 50% Glycerol.
Isotype	IgG2a
Molecular Weight	Calculated: 105kD
Storage Instruction	Store at -20°C for up to 1 year from the date of receipt, and avoid repeat freeze-thaw cycles.

TARGET INFORMATION

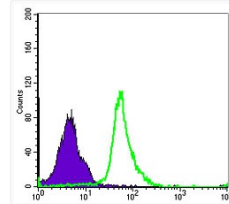
Gene ID	4790
Gene Symbol	NFKB1
UniProt ID	NFKB1_HUMAN
Specificity	NF Kappa B-p105/p50 Monoclonal Antibody detects endogenous levels of NF Kappa B-p105/p50 protein.

ADDITIONAL INFORMATION

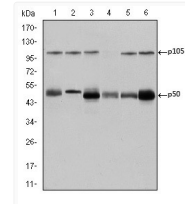
Note STRICTLY FOR FURTHER SCIENTIFIC RESEARCH USE ONLY (RUO). MUST NOT TO BE USED IN DIAGNOSTIC OR THERAPEUTIC APPLICATIONS.



Immunohistochemistry analysis of paraffin-embedded prostate tissues (left) and bladder cancer tissues (right) with DAB staining using NF Kappa B-p105/p50 monoclonal antibody.



Flow cytometric analysis of MCF-7 cells using NF Kappa B-p105/p50 monoclonal antibody (green) and negative control (purple).



Western blot analysis using NF Kappa B-p105/p50 monoclonal antibody against K562 (1), Jurkat (2), A431 (3), HeLa (4), THP-1 (5) and MCF-7 (6) cell lysate.