

## Anti-MB antibody [6H8B5/5A2G8/4D7H3/3H6A7] (STJ98264)

### GENERAL INFORMATION

Product Type	Primary antibodies
Applications	WB/IHC/IF/ELISA
Host / Source	Mouse
Reactivity	Human

### PRODUCT PROPERTIES

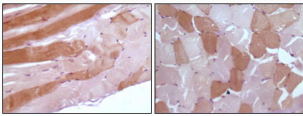
Clonality	Monoclonal
Concentration	1 mg/mL
Conjugation	Unconjugated
Purification	Affinity purification
Dilution Range	WB 1:500-1:2000 IHC 1:200-1:1000 ELISA 1:10000 IF 1:50-200
Formulation	Liquid in PBS containing 0.03% Sodium Azide.
Isotype	IgG1
Molecular Weight	Calculated: 17kD
Storage Instruction	Store at -20°C for up to 1 year from the date of receipt, and avoid repeat freeze-thaw cycles.

### TARGET INFORMATION

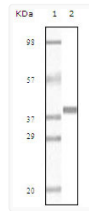
Gene ID	<a href="#">4151</a>
Gene Symbol	<a href="#">MB</a>
UniProt ID	<a href="#">MYG_HUMAN</a>
Specificity	Myoglobin Monoclonal Antibody detects endogenous levels of Myoglobin protein.

### ADDITIONAL INFORMATION

Note **STRICTLY FOR FURTHER SCIENTIFIC RESEARCH USE ONLY (RUO). MUST NOT TO BE USED IN DIAGNOSTIC OR THERAPEUTIC APPLICATIONS.**



Immunohistochemistry analysis of paraffin-embedded human skeletal muscle tissue showing cytoplasmic localization with DAB staining using Myoglobin monoclonal antibody.



Western blot analysis using Myoglobin monoclonal antibody against truncated Myoglobin recombinant protein.