

Anti-MSI1 antibody [2A12] (STJ98253)

GENERAL INFORMATION

Product Type	Primary antibodies
Applications	WB/FC/ELISA
Host / Source	Mouse
Reactivity	Human

PRODUCT PROPERTIES

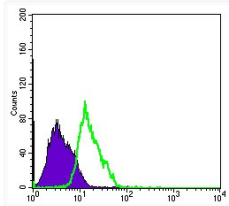
Clonality	Monoclonal
Conjugation	Unconjugated
Purification	Affinity purification
Dilution Range	WB 1:500-1:2000 FC 1:200-1:400 ELISA 1:10000
Formulation	Liquid in PBS containing 0.03% Sodium Azide, 0.5% BSA, 50% Glycerol.
Isotype	IgG1
Molecular Weight	Calculated: 39kD
Storage Instruction	Store at -20°C for up to 1 year from the date of receipt, and avoid repeat freeze-thaw cycles.

TARGET INFORMATION

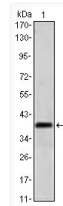
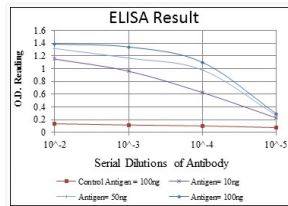
Gene ID	4440
Gene Symbol	MSI1
UniProt ID	MSI1H_HUMAN
Specificity	Msi1 Monoclonal Antibody detects endogenous levels of Msi1 protein.

ADDITIONAL INFORMATION

Note **STRICTLY FOR FURTHER SCIENTIFIC RESEARCH USE ONLY (RUO). MUST NOT TO BE USED IN DIAGNOSTIC OR THERAPEUTIC APPLICATIONS.**



Flow cytometric analysis of PC-2 cells using Msi1 monoclonal antibody (green) and negative control (purple).



Western blot analysis using Msi1 monoclonal antibody against NTERA-2 cell lysate.