

Anti-KMT2A antibody (3751-3968 aa) [10F8D7] (STJ98246)

GENERAL INFORMATION

Product Type	Primary antibodies
Applications	WB/IHC/IF/ELISA
Host / Source	Mouse
Reactivity	Human

PRODUCT PROPERTIES

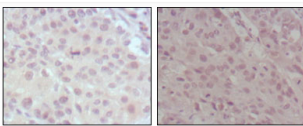
Clonality	Monoclonal
Conjugation	Unconjugated
Purification	Affinity purification
Dilution Range	WB 1:500-1:2000 IHC 1:200-1:1000 ELISA 1:10000 IF 1:50-200
Formulation	Liquid in PBS containing 0.03% Sodium Azide, 0.5% BSA, 50% Glycerol.
Isotype	IgG1
Molecular Weight	Calculated: 432kD
Storage Instruction	Store at -20°C for up to 1 year from the date of receipt, and avoid repeat freeze-thaw cycles.

TARGET INFORMATION

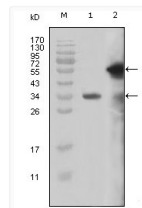
Gene ID	4297
Gene Symbol	KMT2A
UniProt ID	KMT2A_HUMAN
Immunogen Region	3751-3968 aa
Specificity	MLL Monoclonal Antibody detects endogenous levels of MLL protein.

ADDITIONAL INFORMATION

Note STRICTLY FOR FURTHER SCIENTIFIC RESEARCH USE ONLY (RUO). MUST NOT TO BE USED IN DIAGNOSTIC OR THERAPEUTIC APPLICATIONS.



Immunohistochemistry analysis of paraffin-embedded human lung cancer (left) and esophagus cancer (right), showing nuclear localization with DAB staining using MLL monoclonal antibody.



Western blot analysis using MLL monoclonal antibody against truncated MLL recombinant protein (1) and truncated GFP-MLL (aa3714-3969) transfected Cos7 cell lysate (2).