

Anti-CHD3 antibody [2G4] (STJ98244)

GENERAL INFORMATION

Product Type	Primary antibodies
Applications	WB/IHC/IF/FC/ELISA
Host / Source	Mouse
Reactivity	Human/Mouse

PRODUCT PROPERTIES

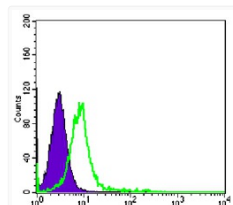
Clonality	Monoclonal
Conjugation	Unconjugated
Purification	Affinity purification
Dilution Range	WB 1:500-1:2000 IHC 1:200-1:1000 IF 1:200-1:1000 FC 1:200-1:400 ELISA 1:10000
Formulation	Liquid in PBS containing 0.03% Sodium Azide, 0.5% BSA, 50% Glycerol.
Isotype	IgG1
Molecular Weight	Calculated: 227kD
Storage Instruction	Store at -20°C for up to 1 year from the date of receipt, and avoid repeat freeze-thaw cycles.

TARGET INFORMATION

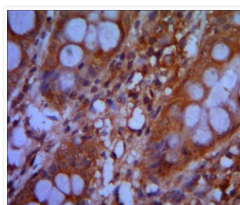
Gene ID	1107
Gene Symbol	CHD3
UniProt ID	CHD3_HUMAN
Specificity	Mi2-Alpha Monoclonal Antibody detects endogenous levels of Mi2-Alpha protein.

ADDITIONAL INFORMATION

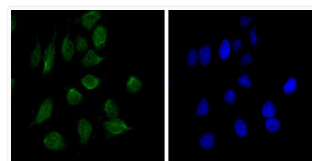
Note STRICTLY FOR FURTHER SCIENTIFIC RESEARCH USE ONLY (RUO). MUST NOT TO BE USED IN DIAGNOSTIC OR THERAPEUTIC APPLICATIONS.



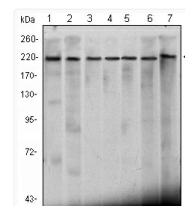
Flow cytometric analysis of K562 cells using Mi2-Alpha monoclonal antibody (green) and negative control (purple).



Immunohistochemistry analysis of paraffin-embedded colon cancer tissues with DAB staining using Mi2-Alpha monoclonal antibody.



Immunofluorescence analysis of HeLa cells using Mi2-Alpha monoclonal antibody (green). Blue: DRAQ5 fluorescent DNA dye.



Western blot analysis using Mi2-Alpha monoclonal antibody against HeLa (1), K562 (2), Jurkat (3), NTERA-2 (4), HEK293 (5), Raji (6) cell lysate and mouse brain (7) tissue lysate.