

Anti-MAP2K6 antibody [3H12B9] (STJ98241)

GENERAL INFORMATION

Product Type	Primary antibodies
Applications	WB/IHC/IF/ELISA
Host / Source	Mouse
Reactivity	Human/Mouse

PRODUCT PROPERTIES

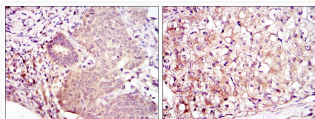
Clonality	Monoclonal
Conjugation	Unconjugated
Purification	Affinity purification
Dilution Range	WB 1:500-1:2000 IHC 1:200-1:1000 ELISA 1:10000 IF 1:50-200
Formulation	Liquid in PBS containing 0.03% Sodium Azide, 0.5% BSA, 50% Glycerol.
Isotype	IgG1
Molecular Weight	Calculated: 37kD
Storage Instruction	Store at -20°C for up to 1 year from the date of receipt, and avoid repeat freeze-thaw cycles.

TARGET INFORMATION

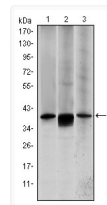
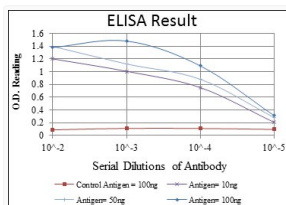
Gene ID	5608
Gene Symbol	MAP2K6
UniProt ID	MP2K6_HUMAN
Specificity	MEK-6 Monoclonal Antibody detects endogenous levels of MEK-6 protein.

ADDITIONAL INFORMATION

Note **STRICTLY FOR FURTHER SCIENTIFIC RESEARCH USE ONLY (RUO). MUST NOT TO BE USED IN DIAGNOSTIC OR THERAPEUTIC APPLICATIONS.**



Immunohistochemistry analysis of paraffin-embedded ovarian cancer (left) and kidney cancer (right) with DAB staining using MEK-6 monoclonal antibody.



Western blot analysis using MEK-6 monoclonal antibody against HepG2 (1), MCF-7 (2) and NIH/3T3 (3) cell lysate.