

## Anti-MAP2K6 antibody [3H12C8] (STJ98240)

### GENERAL INFORMATION

Product Type	Primary antibodies
Applications	WB/IF/FC/ELISA
Host / Source	Mouse
Reactivity	Human/Mouse

### PRODUCT PROPERTIES

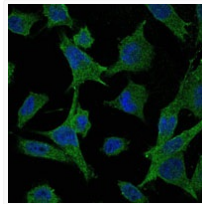
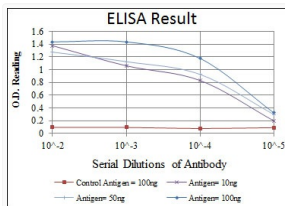
Clonality	Monoclonal
Conjugation	Unconjugated
Purification	Affinity purification
Dilution Range	WB 1:500-1:2000 IF 1:200-1:1000 FC 1:200-1:400 ELISA 1:10000
Formulation	Liquid in PBS containing 0.03% Sodium Azide, 0.5% BSA, 50% Glycerol.
Isotype	IgG1
Molecular Weight	Calculated: 37kD
Storage Instruction	Store at -20°C for up to 1 year from the date of receipt, and avoid repeat freeze-thaw cycles.

### TARGET INFORMATION

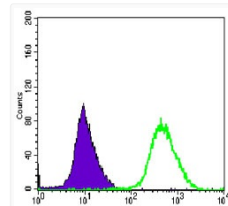
Gene ID	<a href="#">5608</a>
Gene Symbol	<a href="#">MAP2K6</a>
UniProt ID	<a href="#">MP2K6_HUMAN</a>
Specificity	MEK-6 Monoclonal Antibody detects endogenous levels of MEK-6 protein.

### ADDITIONAL INFORMATION

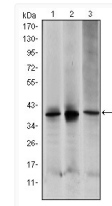
Note STRICTLY FOR FURTHER SCIENTIFIC RESEARCH USE ONLY (RUO). MUST NOT TO BE USED IN DIAGNOSTIC OR THERAPEUTIC APPLICATIONS.



Immunofluorescence analysis of HeLa cells using MEK-6 monoclonal antibody (green). Blue: DRAQ5 fluorescent DNA dye.



Flow cytometric analysis of HeLa cells using MEK-6 monoclonal antibody (green) and negative control (purple).



Western blot analysis using MEK-6 monoclonal antibody against HepG2 (1), MCF-7 (2) and NIH/3T3 (3) cell lysate.