

## Anti-SCGB2A2 antibody [3C8] (STJ98229)

### GENERAL INFORMATION

Product Type	Primary antibodies
Applications	WB/IHC/IF/FC/ELISA
Host / Source	Mouse
Reactivity	Human

### PRODUCT PROPERTIES

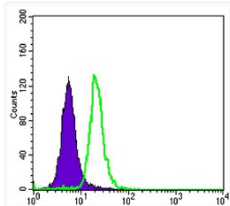
Clonality	Monoclonal
Conjugation	Unconjugated
Purification	Affinity purification
Dilution Range	WB 1:500-1:2000 IHC 1:200-1:1000 IF 1:200-1:1000 FC 1:200-1:400 ELISA 1:10000
Formulation	Liquid in PBS containing 0.03% Sodium Azide, 0.5% BSA, 50% Glycerol.
Isotype	IgG1
Molecular Weight	Calculated: 10kD
Storage Instruction	Store at -20°C for up to 1 year from the date of receipt, and avoid repeat freeze-thaw cycles.

### TARGET INFORMATION

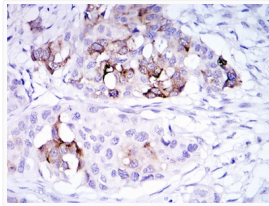
Gene ID	<a href="#">4250</a>
Gene Symbol	<a href="#">SCGB2A2</a>
UniProt ID	<a href="#">SG2A2_HUMAN</a>
Specificity	Mammaglobin A Monoclonal Antibody detects endogenous levels of Mammaglobin A protein.

### ADDITIONAL INFORMATION

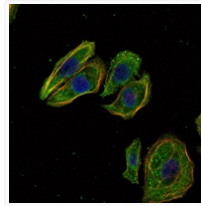
Note **STRICTLY FOR FURTHER SCIENTIFIC RESEARCH USE ONLY (RUO). MUST NOT TO BE USED IN DIAGNOSTIC OR THERAPEUTIC APPLICATIONS.**



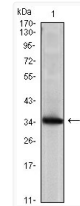
Flow cytometric analysis of SK-BR-3 cells using Mammaglobin A monoclonal antibody (green) and negative control (purple).



Immunohistochemistry analysis of paraffin-embedded mammary cancer tissues with DAB staining using Mammaglobin A monoclonal antibody.



Immunofluorescence analysis of HeLa cells using Mammaglobin A monoclonal antibody (green). Blue: DRAQ5 fluorescent DNA dye. Red: Actin filaments have been labeled with Alexa Fluor-555 phalloidin.



Western blot analysis using Mammaglobin A monoclonal antibody against Mammaglobin A recombinant protein (1).