

Anti-KARS1 antibody (90-174 aa) [8G12C1] (STJ98227)

GENERAL INFORMATION

| | |
|---------------|--------------------|
| Product Type | Primary antibodies |
| Applications | WB/IHC/IF/ELISA |
| Host / Source | Mouse |
| Reactivity | Human |

PRODUCT PROPERTIES

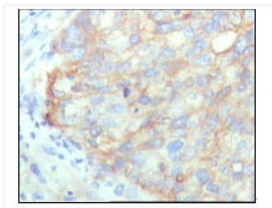
| | |
|---------------------|--|
| Clonality | Monoclonal |
| Conjugation | Unconjugated |
| Purification | Affinity purification |
| Dilution Range | WB 1:500-1:2000 IHC 1:200-1:1000 ELISA 1:10000 IF 1:50-200 |
| Formulation | Liquid in PBS containing 0.03% Sodium Azide, 0.5% BSA, 50% Glycerol. |
| Isotype | IgG1 |
| Molecular Weight | Calculated: 68kD |
| Storage Instruction | Store at -20°C for up to 1 year from the date of receipt, and avoid repeat freeze-thaw cycles. |

TARGET INFORMATION

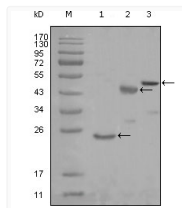
| | |
|------------------|---|
| Gene ID | 3735 |
| Gene Symbol | KARS1 |
| UniProt ID | SYK_HUMAN |
| Immunogen Region | 90-174 aa |
| Specificity | LysRS Monoclonal Antibody detects endogenous levels of LysRS protein. |

ADDITIONAL INFORMATION

Note **STRICTLY FOR FURTHER SCIENTIFIC RESEARCH USE ONLY (RUO). MUST NOT TO BE USED IN DIAGNOSTIC OR THERAPEUTIC APPLICATIONS.**



Immunohistochemistry analysis of paraffin-embedded human cervical carcinoma, showing cytoplasmic localization with DAB staining using LysRS monoclonal antibody.



Western blot analysis using LysRS monoclonal antibody against truncated Trx-LysRS recombinant protein (1), truncated MBP-LysRS (aa90-174) and full length LysRS (aa1-188) transfected CHO-K1 cell lysate (3).