

Anti-MATK antibody [9D7] (STJ98225)

GENERAL INFORMATION

Product Type	Primary antibodies
Applications	WB/FC/ELISA
Host / Source	Mouse
Reactivity	Human

PRODUCT PROPERTIES

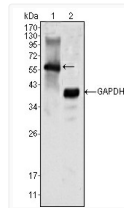
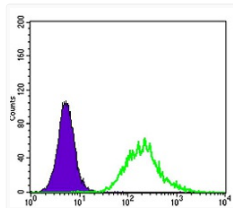
Clonality	Monoclonal
Concentration	1 mg/mL
Conjugation	Unconjugated
Purification	Antibody are purified by protein G affinity chromatography.
Dilution Range	WB 1:500-1:2000 FC 1:200-1:400 ELISA 1:10000
Formulation	Liquid in PBS containing 50% Glycerol and 0.03% Sodium Azide.
Isotype	IgG1
Molecular Weight	Calculated: 56kD
Storage Instruction	Store at -20°C for up to 1 year from the date of receipt, and avoid repeat freeze-thaw cycles.

TARGET INFORMATION

Gene ID	4145
Gene Symbol	MATK
UniProt ID	MATK_HUMAN
Specificity	Lsk Monoclonal Antibody detects endogenous levels of Lsk protein.

ADDITIONAL INFORMATION

Note **STRICTLY FOR FURTHER SCIENTIFIC RESEARCH USE ONLY (RUO). MUST NOT TO BE USED IN DIAGNOSTIC OR THERAPEUTIC APPLICATIONS.**



Flow cytometric analysis of K562 cells using Lsk monoclonal antibody (green) and negative control antibody (purple). Western blot analysis using Lsk monoclonal antibody against K562 cell lysate (1).