

## Anti-KSHV K8 Alpha antibody [8C12G10G1] (STJ98207)

### GENERAL INFORMATION

Product Type	Primary antibodies
Applications	WB/ICC/ELISA
Host / Source	Mouse
Reactivity	Sheep

### PRODUCT PROPERTIES

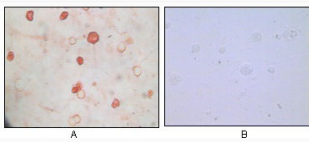
Clonality	Monoclonal
Conjugation	Unconjugated
Purification	Affinity purification
Dilution Range	WB 1:500-1:2000 ICC 1:200-1:1000 ELISA 1:10000
Formulation	Liquid in PBS containing 0.03% Sodium Azide, 0.5% BSA, 50% Glycerol.
Isotype	IgG2a
Storage Instruction	Store at -20°C for up to 1 year from the date of receipt, and avoid repeat freeze-thaw cycles.

### TARGET INFORMATION

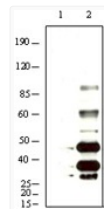
Specificity	KSHV K8 Alpha Monoclonal Antibody detects KSHV K8 Alpha protein.
-------------	--

### ADDITIONAL INFORMATION

Note **STRICTLY FOR FURTHER SCIENTIFIC RESEARCH USE ONLY (RUO). MUST NOT TO BE USED IN DIAGNOSTIC OR THERAPEUTIC APPLICATIONS.**



Immunocytochemistry analysis of TPA induced BCBL-1 cells (A) and uninduced BCBL-1 cells (B) using KSHV K8 Alpha monoclonal antibody with AEC staining.



Western blot analysis using KSHV K8 Alpha monoclonal antibody against BCBL-1 (1) and TPA induced BCBL-1 (2) cell lysate.