

## Anti-KLHL11 antibody [1B9A8] (STJ98200)

### GENERAL INFORMATION

Product Type	Primary antibodies
Applications	WB/IF/FC/ELISA
Host / Source	Mouse
Reactivity	Human

### PRODUCT PROPERTIES

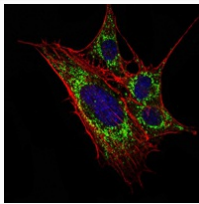
Clonality	Monoclonal
Conjugation	Unconjugated
Purification	Affinity purification
Dilution Range	WB 1:500-1:2000 IF 1:200-1:1000 FC 1:200-1:400 ELISA 1:10000
Formulation	Liquid in PBS containing 0.03% Sodium Azide, 0.5% BSA, 50% Glycerol.
Isotype	IgG1
Molecular Weight	Calculated: 80kD
Storage Instruction	Store at -20°C for up to 1 year from the date of receipt, and avoid repeat freeze-thaw cycles.

### TARGET INFORMATION

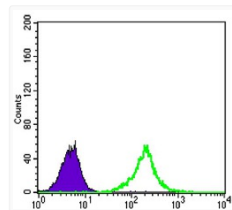
Gene ID	<a href="#">55175</a>
Gene Symbol	<a href="#">KLHL11</a>
UniProt ID	<a href="#">KLHL11_HUMAN</a>
Specificity	KLHL11 Monoclonal Antibody detects endogenous levels of KLHL11 protein.

### ADDITIONAL INFORMATION

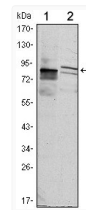
Note **STRICTLY FOR FURTHER SCIENTIFIC RESEARCH USE ONLY (RUO). MUST NOT TO BE USED IN DIAGNOSTIC OR THERAPEUTIC APPLICATIONS.**



Immunofluorescence analysis of 3T3-L1 cells using KLHL11 monoclonal antibody (green). Blue: DRAQ5 fluorescent DNA dye. Red: Actin filaments have been labeled with Alexa Fluor-555 phalloidin.



Flow cytometric analysis of K562 cells using KLHL11 monoclonal antibody (green) and negative control (purple).



Western blot analysis using KLHL11 monoclonal antibody against HeLa (1) and MCF-7 (2) cell lysate.