

Anti-KLHL1 antibody [3A8] (STJ98199)

GENERAL INFORMATION

Product Type	Primary antibodies
Applications	WB/IF/ELISA
Host / Source	Mouse
Reactivity	Human

PRODUCT PROPERTIES

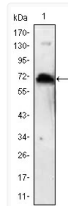
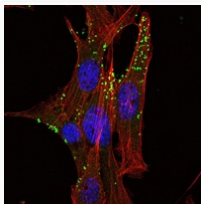
Clonality	Monoclonal
Conjugation	Unconjugated
Purification	Affinity purification
Dilution Range	WB 1:500-1:2000 IF 1:200-1:1000 ELISA 1:10000
Formulation	Liquid in PBS containing 0.03% Sodium Azide, 0.5% BSA, 50% Glycerol.
Isotype	IgG1
Molecular Weight	Calculated: 83kD
Storage Instruction	Store at -20°C for up to 1 year from the date of receipt, and avoid repeat freeze-thaw cycles.

TARGET INFORMATION

Gene ID	57626
Gene Symbol	KLHL1
UniProt ID	KLHL1_HUMAN
Specificity	KLHL1 Monoclonal Antibody detects endogenous levels of KLHL1 protein.

ADDITIONAL INFORMATION

Note **STRICTLY FOR FURTHER SCIENTIFIC RESEARCH USE ONLY (RUO). MUST NOT TO BE USED IN DIAGNOSTIC OR THERAPEUTIC APPLICATIONS.**



Immunofluorescence analysis of NIH/3T3 cells using KLHL1 monoclonal antibody (green). Red: Actin filaments have been labeled with Alexa Fluor-555 phalloidin.

Western blot analysis using KLHL1 monoclonal antibody against KLHL1 recombinant protein.