

Anti-HIF1A antibody [1A3] (STJ98135)

GENERAL INFORMATION

Product Type	Primary antibodies
Applications	WB/IHC/IF/ELISA
Host / Source	Mouse
Reactivity	Human/Mouse/Monkey

PRODUCT PROPERTIES

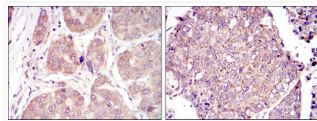
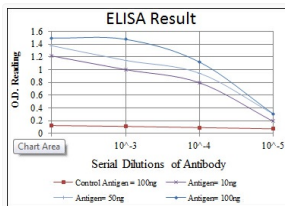
Clonality	Monoclonal
Conjugation	Unconjugated
Purification	Affinity purification
Dilution Range	WB 1:500-1:2000 IHC 1:200-1:1000 IF 1:200-1:1000 ELISA 1:10000
Formulation	Liquid in PBS containing 0.03% Sodium Azide, 0.5% BSA, 50% Glycerol.
Isotype	IgG1
Molecular Weight	Calculated: 93kD
Storage Instruction	Store at -20°C for up to 1 year from the date of receipt, and avoid repeat freeze-thaw cycles.

TARGET INFORMATION

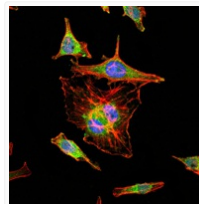
Gene ID	3091
Gene Symbol	HIF1A
UniProt ID	HIF1A_HUMAN
Specificity	HIF-1 Alpha Monoclonal Antibody detects endogenous levels of HIF-1 Alpha protein.

ADDITIONAL INFORMATION

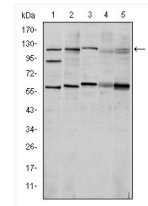
Note **STRICTLY FOR FURTHER SCIENTIFIC RESEARCH USE ONLY (RUO). MUST NOT TO BE USED IN DIAGNOSTIC OR THERAPEUTIC APPLICATIONS.**



Immunohistochemistry analysis of paraffin-embedded liver cancer tissues (left) and lung cancer tissues (right) with DAB staining using HIF-1 Alpha monoclonal antibody.



Immunofluorescence analysis of HeLa cells using HIF-1 Alpha monoclonal antibody (green). Blue: DRAQ5 fluorescent DNA dye. Red: Actin filaments.



Western blot analysis using HIF-1 Alpha monoclonal antibody against Cos7 (1), HeLa (2), Jurkat (3), RAJI (4) and NIH/3T3 (5) cell lysate. have been labeled with Alexa Fluor-555 phalloidin.