

Anti-G6PD antibody [2H7] (STJ98094)

GENERAL INFORMATION

Product Type	Primary antibodies
Applications	WB/IHC/IF/FC/ELISA
Host / Source	Mouse
Reactivity	Human

PRODUCT PROPERTIES

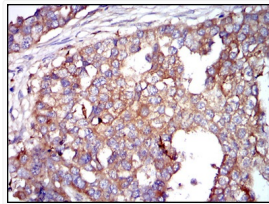
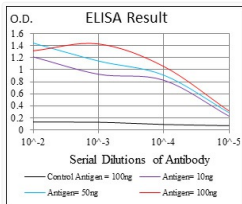
Clonality	Monoclonal
Conjugation	Unconjugated
Purification	Affinity purification
Dilution Range	WB 1:500-1:2000 IHC 1:200-1:1000 FC 1:200-1:400 ELISA 1:10000 IF 1:50-200
Formulation	Liquid in PBS containing 0.03% Sodium Azide, 0.5% BSA, 50% Glycerol.
Isotype	IgG1
Molecular Weight	Calculated: 59kD
Storage Instruction	Store at -20°C for up to 1 year from the date of receipt, and avoid repeat freeze-thaw cycles.

TARGET INFORMATION

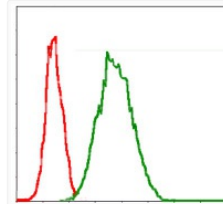
Gene ID	2539
Gene Symbol	G6PD
UniProt ID	G6PD_HUMAN
Specificity	G6PD Monoclonal Antibody detects endogenous levels of G6PD protein.

ADDITIONAL INFORMATION

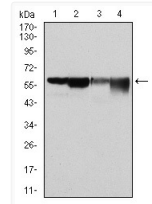
Note **STRICTLY FOR FURTHER SCIENTIFIC RESEARCH USE ONLY (RUO). MUST NOT TO BE USED IN DIAGNOSTIC OR THERAPEUTIC APPLICATIONS.**



Immunohistochemistry analysis of paraffin-embedded breast cancer tissues with DAB staining using G6PD monoclonal antibody.



Flow cytometric analysis of Jurkat cells using G6PD monoclonal antibody (green) and negative control (red).



Western blot analysis using G6PD monoclonal antibody against HeLa (1), MCF-7 (2), Jurkat (3) and K562 (4) cell lysate.