

## Anti-FGFR1 antibody (22-376 aa) [3D4F7] (STJ98078)

### GENERAL INFORMATION

Product Type	Primary antibodies
Applications	WB/ELISA
Host / Source	Mouse
Reactivity	Human

### PRODUCT PROPERTIES

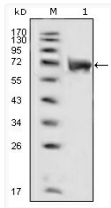
Clonality	Monoclonal
Conjugation	Unconjugated
Purification	Affinity purification
Dilution Range	WB 1:500-1:2000 ELISA 1:10000
Formulation	Liquid in PBS containing 0.03% Sodium Azide, 0.5% BSA, 50% Glycerol.
Isotype	IgG2b
Molecular Weight	Calculated: 120kD Observed: full length 120-140kD, FOP-FGFR1 90kD
Storage Instruction	Store at -20°C for up to 1 year from the date of receipt, and avoid repeat freeze-thaw cycles.

### TARGET INFORMATION

Gene ID	<a href="#">2260</a>
Gene Symbol	<a href="#">FGFR1</a>
UniProt ID	<a href="#">FGFR1_HUMAN</a>
Immunogen Region	22-376 aa
Specificity	Flg Monoclonal Antibody detects endogenous levels of Flg protein.

### ADDITIONAL INFORMATION

Note STRICTLY FOR FURTHER SCIENTIFIC RESEARCH USE ONLY (RUO). MUST NOT TO BE USED IN DIAGNOSTIC OR THERAPEUTIC APPLICATIONS.



Western blot analysis using FLG monoclonal antibody against extracellular domain of human FLG (aa22-376).