

## Anti-FES antibody [2E3G3/2G9G1] (STJ98065)

### GENERAL INFORMATION

Product Type	Primary antibodies
Applications	WB/IHC/IF/ELISA
Host / Source	Mouse
Reactivity	Human

### PRODUCT PROPERTIES

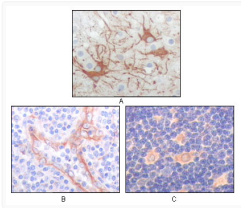
Clonality	Monoclonal
Conjugation	Unconjugated
Purification	Affinity purification
Dilution Range	WB 1:500-1:2000 IHC 1:200-1:1000 ELISA 1:10000 IF 1:50-200
Formulation	Liquid in PBS containing 0.03% Sodium Azide, 0.5% BSA, 50% Glycerol.
Isotype	IgG1
Molecular Weight	Calculated: 93kD
Storage Instruction	Store at -20°C for up to 1 year from the date of receipt, and avoid repeat freeze-thaw cycles.

### TARGET INFORMATION

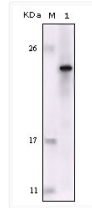
Gene ID	<a href="#">2242</a>
Gene Symbol	<a href="#">FES</a>
UniProt ID	<a href="#">FES_HUMAN</a>
Specificity	Fes Monoclonal Antibody detects endogenous levels of Fes protein.

### ADDITIONAL INFORMATION

Note **STRICTLY FOR FURTHER SCIENTIFIC RESEARCH USE ONLY (RUO). MUST NOT TO BE USED IN DIAGNOSTIC OR THERAPEUTIC APPLICATIONS.**



Immunohistochemistry analysis of paraffin-embedded human cerebrum tumor (A), endothelium of vessel (B), lymphocyte of thymus (C), showing cytoplasmic localization with DAB staining using Fes monoclonal antibody.



Western blot analysis using Fes monoclonal antibody against truncated Fes recombinant protein.