

Anti-ERBB3 antibody (1175-1275 aa) [3F10F6] (STJ98042)

GENERAL INFORMATION

Product Type	Primary antibodies
Applications	WB/IHC/IF/ELISA
Host / Source	Mouse
Reactivity	Human

PRODUCT PROPERTIES

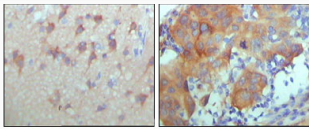
Clonality	Monoclonal
Conjugation	Unconjugated
Purification	Affinity purification
Dilution Range	WB 1:500-1:2000 IHC 1:200-1:1000 ELISA 1:10000 IF 1:50-200
Formulation	Liquid in PBS containing 0.03% Sodium Azide, 0.5% BSA, 50% Glycerol.
Isotype	IgG1
Molecular Weight	Calculated: 148kD
Storage Instruction	Store at -20°C for up to 1 year from the date of receipt, and avoid repeat freeze-thaw cycles.

TARGET INFORMATION

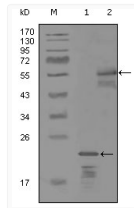
Gene ID	2065
Gene Symbol	ERBB3
UniProt ID	ERBB3_HUMAN
Immunogen Region	1175-1275 aa
Specificity	ErbB-3 Monoclonal Antibody detects endogenous levels of ErbB-3 protein.

ADDITIONAL INFORMATION

Note STRICTLY FOR FURTHER SCIENTIFIC RESEARCH USE ONLY (RUO). MUST NOT TO BE USED IN DIAGNOSTIC OR THERAPEUTIC APPLICATIONS.



Immunohistochemistry analysis of paraffin-embedded human cerebra (left) and breast carcinoma tissue (right), showing cytoplasmic and membrane location with DAB staining using ErbB-3 monoclonal antibody.



Western blot analysis using ErbB-3 monoclonal antibody against truncated Trx-ErbB-3 recombinant protein (1) and MBP-ErbB-3 (aa1175-1275) recombinant protein (2).