

## Anti-ETV1 antibody (1-191 aa) [1C8B6] (STJ98041)

### GENERAL INFORMATION

Product Type	Primary antibodies
Applications	WB/ELISA
Host / Source	Mouse
Reactivity	Human

### PRODUCT PROPERTIES

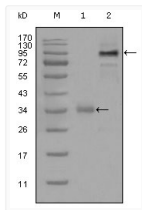
Clonality	Monoclonal
Conjugation	Unconjugated
Purification	Affinity purification
Dilution Range	WB 1:500-1:2000 ELISA 1:10000
Formulation	Liquid in PBS containing 0.03% Sodium Azide, 0.5% BSA, 50% Glycerol.
Isotype	IgG1
Molecular Weight	Calculated: 55kD
Storage Instruction	Store at -20°C for up to 1 year from the date of receipt, and avoid repeat freeze-thaw cycles.

### TARGET INFORMATION

Gene ID	<a href="#">2115</a>
Gene Symbol	<a href="#">ETV1</a>
UniProt ID	<a href="#">ETV1_HUMAN</a>
Immunogen Region	1-191 aa
Specificity	ER81 Monoclonal Antibody detects endogenous levels of ER81 protein.

### ADDITIONAL INFORMATION

Note **STRICTLY FOR FURTHER SCIENTIFIC RESEARCH USE ONLY (RUO). MUST NOT TO BE USED IN DIAGNOSTIC OR THERAPEUTIC APPLICATIONS.**



Western blot analysis using ER81 monoclonal antibody against truncated Trx-ETV1 recombinant protein (1) and full-length ETV1 (aa1-477) - hlgGfC transfected CHO-K1 cell lysate (2).