

Anti-EPHB4 antibody [5B8F7] (STJ98034)

GENERAL INFORMATION

| | |
|---------------|--------------------|
| Product Type | Primary antibodies |
| Applications | WB/IHC/IF/ELISA |
| Host / Source | Mouse |
| Reactivity | Human |

PRODUCT PROPERTIES

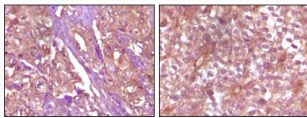
| | |
|---------------------|--|
| Clonality | Monoclonal |
| Conjugation | Unconjugated |
| Purification | Affinity purification |
| Dilution Range | WB 1:500-1:2000 IHC 1:200-1:1000 ELISA 1:10000 IF 1:50-200 |
| Formulation | Liquid in PBS containing 0.03% Sodium Azide, 0.5% BSA, 50% Glycerol. |
| Isotype | IgG2a |
| Molecular Weight | Calculated: 108kD |
| Storage Instruction | Store at -20°C for up to 1 year from the date of receipt, and avoid repeat freeze-thaw cycles. |

TARGET INFORMATION

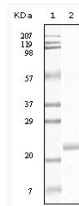
| | |
|-------------|---|
| Gene ID | 2050 |
| Gene Symbol | EPHB4 |
| UniProt ID | EPHB4_HUMAN |
| Specificity | EphB4 Monoclonal Antibody detects endogenous levels of EphB4 protein. |

ADDITIONAL INFORMATION

Note **STRICTLY FOR FURTHER SCIENTIFIC RESEARCH USE ONLY (RUO). MUST NOT TO BE USED IN DIAGNOSTIC OR THERAPEUTIC APPLICATIONS.**



Immunohistochemistry analysis of paraffin-embedded Human pancreas carcinoma (left) and breast carcinoma (right) tissue, showing membrane and cytoplasmic (pancreas carcinoma) localization, membrane (breast carcinoma) localization with DAB staining using Ep



Western blot analysis using EphB4 monoclonal antibody against truncated EphB4 recombinant protein.