

## Anti-EPHB3 antibody (39-212 aa) [4A122D1] (STJ98033)

### GENERAL INFORMATION

Product Type	Primary antibodies
Applications	WB/IHC/IF/ELISA
Host / Source	Mouse
Reactivity	Human

### PRODUCT PROPERTIES

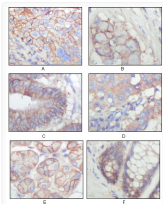
Clonality	Monoclonal
Conjugation	Unconjugated
Purification	Affinity purification
Dilution Range	WB 1:500-1:2000 IHC 1:200-1:1000 ELISA 1:10000 IF 1:50-200
Formulation	Liquid in PBS containing 0.03% Sodium Azide, 0.5% BSA, 50% Glycerol.
Isotype	IgG2a
Molecular Weight	Calculated: 110kD
Storage Instruction	Store at -20°C for up to 1 year from the date of receipt, and avoid repeat freeze-thaw cycles.

### TARGET INFORMATION

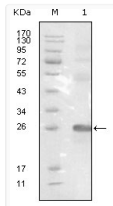
Gene ID	<a href="#">2049</a>
Gene Symbol	<a href="#">EPHB3</a>
UniProt ID	<a href="#">EPHB3_HUMAN</a>
Immunogen Region	39-212 aa
Specificity	EphB3 Monoclonal Antibody detects endogenous levels of EphB3 protein.

### ADDITIONAL INFORMATION

Note STRICTLY FOR FURTHER SCIENTIFIC RESEARCH USE ONLY (RUO). MUST NOT TO BE USED IN DIAGNOSTIC OR THERAPEUTIC APPLICATIONS.



Immunohistochemistry analysis of paraffin-embedded human lung squamous cell carcinoma (A), lung adenocarcinoma (B), colon carcinoma (C), breast carcinoma (D), normal sublingual gland (E), normal rectal (F), showing membrane localization with DAB staining



Western blot analysis using EphB3 monoclonal antibody against truncated EphB3-His recombinant protein.