

Anti-EPHB2 antibody (17-200 aa) [2D12C6] (STJ98032)

GENERAL INFORMATION

Product Type	Primary antibodies
Applications	WB/IF/ELISA
Host / Source	Mouse
Reactivity	Human

PRODUCT PROPERTIES

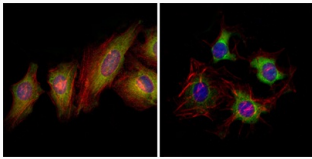
Clonality	Monoclonal
Conjugation	Unconjugated
Purification	Affinity purification
Dilution Range	WB 1:500-1:2000 IF 1:200-1:1000 ELISA 1:10000
Formulation	Liquid in PBS containing 0.03% Sodium Azide, 0.5% BSA, 50% Glycerol.
Isotype	IgG2b
Molecular Weight	Calculated: 117kD
Storage Instruction	Store at -20°C for up to 1 year from the date of receipt, and avoid repeat freeze-thaw cycles.

TARGET INFORMATION

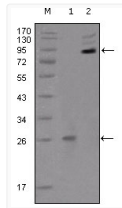
Gene ID	2048
Gene Symbol	EPHB2
UniProt ID	EPHB2_HUMAN
Immunogen Region	17-200 aa
Specificity	EphB2 Monoclonal Antibody detects endogenous levels of EphB2 protein.

ADDITIONAL INFORMATION

Note **STRICTLY FOR FURTHER SCIENTIFIC RESEARCH USE ONLY (RUO). MUST NOT TO BE USED IN DIAGNOSTIC OR THERAPEUTIC APPLICATIONS.**



Immunofluorescence analysis of HeLa (left) and HepG2 (right) cells using EphB2 monoclonal antibody (green). Red: Actin filaments have been labeled with DY-554 phalloidin. Blue: DRAQ5 fluorescent DNA dye.



Western blot analysis using EphB2 monoclonal antibody against truncated EphB2 recombinant protein (1) and extracellular EphB2 (aa19-476) - hlgGFc transfected CHO-K1 cell lysate (2).