

## Anti-EPHA6 antibody (695-795 aa) [3D5B10] (STJ98028)

### GENERAL INFORMATION

Product Type	Primary antibodies
Applications	WB/ELISA
Host / Source	Mouse
Reactivity	Human

### PRODUCT PROPERTIES

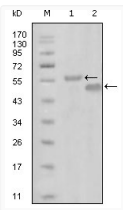
Clonality	Monoclonal
Conjugation	Unconjugated
Purification	Affinity purification
Dilution Range	WB 1:500-1:2000 ELISA 1:10000
Formulation	Liquid in PBS containing 0.03% Sodium Azide, 0.5% BSA, 50% Glycerol.
Isotype	IgG1
Molecular Weight	Calculated: 116kD
Storage Instruction	Store at -20°C for up to 1 year from the date of receipt, and avoid repeat freeze-thaw cycles.

### TARGET INFORMATION

Gene ID	<a href="#">285220</a>
Gene Symbol	<a href="#">EPHA6</a>
UniProt ID	<a href="#">EPHA6_HUMAN</a>
Immunogen Region	695-795 aa
Specificity	EphA6 Monoclonal Antibody detects endogenous levels of EphA6 protein.

### ADDITIONAL INFORMATION

Note STRICTLY FOR FURTHER SCIENTIFIC RESEARCH USE ONLY (RUO). MUST NOT TO BE USED IN DIAGNOSTIC OR THERAPEUTIC APPLICATIONS.



Western blot analysis using EphA6 monoclonal antibody against truncated MBP-EphA6 recombinant protein (1) and truncated GST-EphA6 (aa695-795) recombinant protein (2).