

Anti-EPHA4 antibody (777-986 aa) [7D3D4] (STJ98026)

GENERAL INFORMATION

Product Type	Primary antibodies
Applications	WB/ELISA
Host / Source	Mouse
Reactivity	Human

PRODUCT PROPERTIES

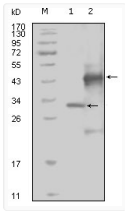
Clonality	Monoclonal
Conjugation	Unconjugated
Purification	Affinity purification
Dilution Range	WB 1:500-1:2000 ELISA 1:10000
Formulation	Liquid in PBS containing 0.03% Sodium Azide, 0.5% BSA, 50% Glycerol.
Isotype	IgG1
Molecular Weight	Calculated: 110kD
Storage Instruction	Store at -20°C for up to 1 year from the date of receipt, and avoid repeat freeze-thaw cycles.

TARGET INFORMATION

Gene ID	2043
Gene Symbol	EPHA4
UniProt ID	EPHA4_HUMAN
Immunogen Region	777-986 aa
Specificity	EphA4 Monoclonal Antibody detects endogenous levels of EphA4 protein.

ADDITIONAL INFORMATION

Note STRICTLY FOR FURTHER SCIENTIFIC RESEARCH USE ONLY (RUO). MUST NOT TO BE USED IN DIAGNOSTIC OR THERAPEUTIC APPLICATIONS.



Western blot analysis using EphA4 monoclonal antibody against truncated Trx-EphA4 recombinant protein (1) and truncated GST-EphA4 (aa777-986) recombinant protein (2).