

## Anti-EPHA10 antibody [2E8] (STJ98023)

### GENERAL INFORMATION

Product Type	Primary antibodies
Applications	WB/ELISA
Host / Source	Mouse
Reactivity	Human

### PRODUCT PROPERTIES

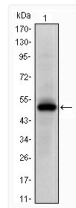
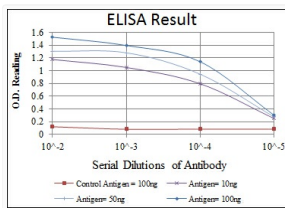
Clonality	Monoclonal
Conjugation	Unconjugated
Purification	Affinity purification
Dilution Range	WB 1:500-1:2000 ELISA 1:10000
Formulation	Liquid in PBS containing 0.03% Sodium Azide, 0.5% BSA, 50% Glycerol.
Isotype	IgG2a
Molecular Weight	Calculated: 110kD
Storage Instruction	Store at -20°C for up to 1 year from the date of receipt, and avoid repeat freeze-thaw cycles.

### TARGET INFORMATION

Gene ID	<a href="#">284656</a>
Gene Symbol	<a href="#">EPHA10</a>
UniProt ID	<a href="#">EPHAA_HUMAN</a>
Specificity	EphA10 Monoclonal Antibody detects endogenous levels of EphA10 protein.

### ADDITIONAL INFORMATION

Note STRICTLY FOR FURTHER SCIENTIFIC RESEARCH USE ONLY (RUO). MUST NOT TO BE USED IN DIAGNOSTIC OR THERAPEUTIC APPLICATIONS.



Western blot analysis using EphA10 monoclonal antibody against human EphA10 (AA: 34-295) recombinant protein.