

## Anti-EPCAM antibody [7E11] (STJ98021)

### GENERAL INFORMATION

Product Type	Primary antibodies
Applications	WB/IHC/IF/ELISA
Host / Source	Mouse
Reactivity	Human

### PRODUCT PROPERTIES

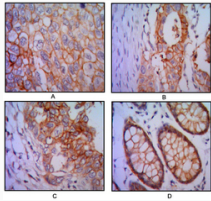
Clonality	Monoclonal
Conjugation	Unconjugated
Purification	Affinity purification
Dilution Range	WB 1:500-1:2000 IHC 1:200-1:1000 ELISA 1:10000 IF 1:50-200
Formulation	Liquid in PBS containing 0.03% Sodium Azide, 0.5% BSA, 50% Glycerol.
Isotype	IgG1
Molecular Weight	Calculated: 35kD
Storage Instruction	Store at -20°C for up to 1 year from the date of receipt, and avoid repeat freeze-thaw cycles.

### TARGET INFORMATION

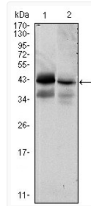
Gene ID	<a href="#">4072</a>
Gene Symbol	<a href="#">EPCAM</a>
UniProt ID	<a href="#">EPCAM_HUMAN</a>
Specificity	EP-CAM Monoclonal Antibody detects endogenous levels of EP-CAM protein.

### ADDITIONAL INFORMATION

Note STRICTLY FOR FURTHER SCIENTIFIC RESEARCH USE ONLY (RUO). MUST NOT TO BE USED IN DIAGNOSTIC OR THERAPEUTIC APPLICATIONS.



Immunohistochemistry analysis of paraffin-embedded human lung cancer (A), colon cancer (B), breast cancer (C) and rectal cancer (D) with DAB staining using EP-CAM monoclonal antibody.



Western blot analysis using EP-CAM monoclonal antibody against HTC116 (1) and T47D (2) cell lysate.