

## Anti-ITK antibody [5G6] (STJ98020)

### GENERAL INFORMATION

Product Type	Primary antibodies
Applications	WB/IF/FC/ELISA
Host / Source	Mouse
Reactivity	Human

### PRODUCT PROPERTIES

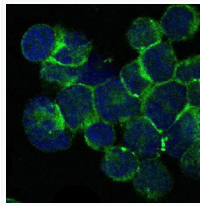
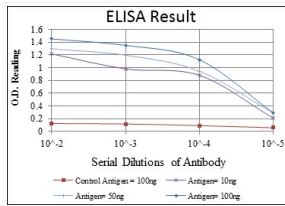
Clonality	Monoclonal
Conjugation	Unconjugated
Purification	Affinity purification
Dilution Range	WB 1:500-1:2000 IF 1:200-1:1000 FC 1:200-1:400 ELISA 1:10000
Formulation	Liquid in PBS containing 0.03% Sodium Azide, 0.5% BSA, 50% Glycerol.
Isotype	IgG1
Molecular Weight	Calculated: 72kD
Storage Instruction	Store at -20°C for up to 1 year from the date of receipt, and avoid repeat freeze-thaw cycles.

### TARGET INFORMATION

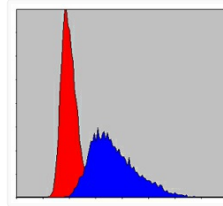
Gene ID	<a href="#">3702</a>
Gene Symbol	<a href="#">ITK</a>
UniProt ID	<a href="#">ITK_HUMAN</a>
Specificity	Emt Monoclonal Antibody detects endogenous levels of Emt protein.

### ADDITIONAL INFORMATION

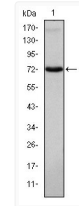
Note **STRICTLY FOR FURTHER SCIENTIFIC RESEARCH USE ONLY (RUO). MUST NOT TO BE USED IN DIAGNOSTIC OR THERAPEUTIC APPLICATIONS.**



Immunofluorescence analysis of Jurkat cells using Emt monoclonal antibody (green). Blue: DRAQ5 fluorescent DNA dye.



Flow cytometric analysis of Jurkat cells using Emt monoclonal antibody (blue) and negative control (red).



Western blot analysis using Emt monoclonal antibody against Jurkat cell lysate.