

Anti-ELK1 antibody [3H6D12/4H9C8/4H9F1] (STJ98017)

GENERAL INFORMATION

Product Type	Primary antibodies
Applications	WB/IHC/IF/ELISA
Host / Source	Mouse
Reactivity	Human

PRODUCT PROPERTIES

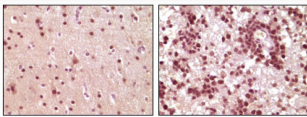
Clonality	Monoclonal
Conjugation	Unconjugated
Purification	Affinity purification
Dilution Range	WB 1:500-1:2000 IHC 1:200-1:1000 ELISA 1:10000 IF 1:50-200
Formulation	Liquid in PBS containing 0.03% Sodium Azide, 0.5% BSA, 50% Glycerol.
Isotype	IgG1
Molecular Weight	Calculated: 45kD
Storage Instruction	Store at -20°C for up to 1 year from the date of receipt, and avoid repeat freeze-thaw cycles.

TARGET INFORMATION

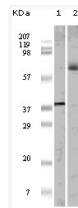
Gene ID	2002
Gene Symbol	ELK1
UniProt ID	ELK1_HUMAN
Specificity	Elk1 Monoclonal Antibody detects endogenous levels of Elk1 protein.

ADDITIONAL INFORMATION

Note **STRICTLY FOR FURTHER SCIENTIFIC RESEARCH USE ONLY (RUO). MUST NOT TO BE USED IN DIAGNOSTIC OR THERAPEUTIC APPLICATIONS.**



Immunohistochemistry analysis of paraffin-embedded human brain tumor tissue, showing nuclear and cytoplasmic localization with DAB staining using Elk1 monoclonal antibody.



Western blot analysis using Elk1 monoclonal antibody against truncated ELK1 recombinant protein (1) and K562 cell lysate (2).