

Anti-Pan-KRT5 antibody [7H8] (STJ97994)

GENERAL INFORMATION

| | |
|---------------|--------------------|
| Product Type | Primary antibodies |
| Applications | IHC/IF/ELISA |
| Host / Source | Mouse |
| Reactivity | Human |

PRODUCT PROPERTIES

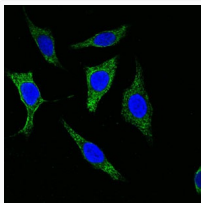
| | |
|---------------------|--|
| Clonality | Monoclonal |
| Conjugation | Unconjugated |
| Purification | Affinity purification |
| Dilution Range | IHC 1:200-1:1000 IF 1:200-1:1000 ELISA 1:10000 |
| Formulation | Liquid in PBS containing 0.03% Sodium Azide, 0.5% BSA, 50% Glycerol. |
| Isotype | IgG1 |
| Storage Instruction | Store at -20°C for up to 1 year from the date of receipt, and avoid repeat freeze-thaw cycles. |

TARGET INFORMATION

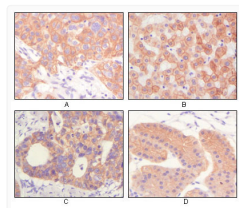
| | |
|-------------|---|
| Gene ID | 3852 |
| Gene Symbol | KRT5 |
| UniProt ID | K2C5_HUMAN |
| Specificity | Cytokeratin (Pan) Monoclonal Antibody detects endogenous levels of Cytokeratin (Pan) protein. |

ADDITIONAL INFORMATION

Note STRICTLY FOR FURTHER SCIENTIFIC RESEARCH USE ONLY (RUO). MUST NOT TO BE USED IN DIAGNOSTIC OR THERAPEUTIC APPLICATIONS.



Confocal immunofluorescence analysis of methanol-fixed Eca-109 cells using Cytokeratin (Pan) monoclonal antibody (green), showing cytoplasmic localization. Blue: DRAQ5 fluorescent DNA dye.



Immunohistochemistry analysis of paraffin-embedded human lung squamous cell carcinoma (A), normal hepatocyte (B), colon adenocarcinoma, normal stomach tissue (D), showing cytoplasmic and membrane localization with DAB staining using Cytokeratin (Pan) Monoclonal antibody.