

Anti-KRT15 antibody [6E7] (STJ97982)

GENERAL INFORMATION

Product Type	Primary antibodies
Applications	WB/IHC/IF/FC/ELISA
Host / Source	Mouse
Reactivity	Human

PRODUCT PROPERTIES

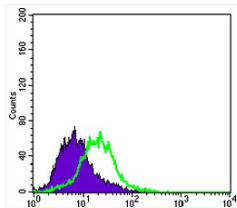
Clonality	Monoclonal
Conjugation	Unconjugated
Purification	Affinity purification
Dilution Range	WB 1:500-1:2000 IHC 1:200-1:1000 IF 1:200-1:1000 FC 1:200-1:400 ELISA 1:10000
Formulation	Liquid in PBS containing 0.03% Sodium Azide, 0.5% BSA, 50% Glycerol.
Isotype	IgG2a
Molecular Weight	Calculated: 49kD
Storage Instruction	Store at -20°C for up to 1 year from the date of receipt, and avoid repeat freeze-thaw cycles.

TARGET INFORMATION

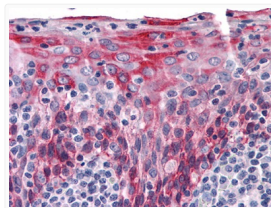
Gene ID	3866
Gene Symbol	KRT15
UniProt ID	K1C15_HUMAN
Specificity	Cytokeratin 15 Monoclonal Antibody detects endogenous levels of Cytokeratin 15 protein.

ADDITIONAL INFORMATION

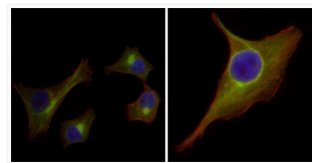
Note STRICTLY FOR FURTHER SCIENTIFIC RESEARCH USE ONLY (RUO). MUST NOT TO BE USED IN DIAGNOSTIC OR THERAPEUTIC APPLICATIONS.



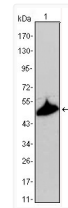
Flow cytometric analysis of PACN-1 cells using Cytokeratin 15 monoclonal antibody (green) and negative control (purple).



Immunohistochemistry analysis of paraffin-embedded human Tonsil tissues with AEC staining using Cytokeratin 15 monoclonal antibody.



Immunofluorescence analysis of HepG2 (left) and PACN-1 (right) cells using Cytokeratin 15 monoclonal antibody (green). Red: Actin filaments have been labeled with DY-554 phalloidin. Blue: DRAQ5 fluorescent DNA dye.



Western blot analysis using Cytokeratin 15 monoclonal antibody against A431 cell lysate.