

Anti-CRYAB antibody (1-175 aa) [1D11C6E6] (STJ97971)

GENERAL INFORMATION

Product Type	Primary antibodies
Applications	WB/IHC/IF/ELISA
Host / Source	Mouse
Reactivity	Human

PRODUCT PROPERTIES

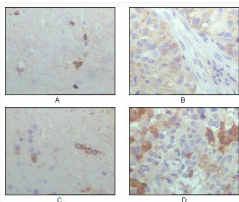
Clonality	Monoclonal
Conjugation	Unconjugated
Purification	Affinity purification
Dilution Range	WB 1:500-1:2000 IHC 1:200-1:1000 ELISA 1:10000 IF 1:50-200
Formulation	Liquid in PBS containing 0.03% Sodium Azide, 0.5% BSA, 50% Glycerol.
Isotype	IgG2a
Molecular Weight	Calculated: 20kD
Storage Instruction	Store at -20°C for up to 1 year from the date of receipt, and avoid repeat freeze-thaw cycles.

TARGET INFORMATION

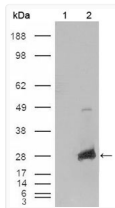
Gene ID	1410
Gene Symbol	CRYAB
UniProt ID	CRYAB_HUMAN
Immunogen Region	1-175 aa
Specificity	Crystallin-Alpha B Monoclonal Antibody detects endogenous levels of Crystallin-Alpha B protein.

ADDITIONAL INFORMATION

Note STRICTLY FOR FURTHER SCIENTIFIC RESEARCH USE ONLY (RUO). MUST NOT TO BE USED IN DIAGNOSTIC OR THERAPEUTIC APPLICATIONS.



Immunohistochemistry analysis of paraffin-embedded human brain hippocampus (A), lung cancer (B), brain tumor (C), breast cancer (D), showing cytoplasmic localization with DAB staining using Crystallin-Alpha B monoclonal antibody.



Western blot analysis using Crystallin-Alpha B monoclonal antibody against HEK293T cells transfected with the pCMV6-ENTRY control (1) and pCMV6-ENTRY CRYAB cDNA (2).