

## Anti-CRKL antibody [5E12] (STJ97970)

### GENERAL INFORMATION

|               |                    |
|---------------|--------------------|
| Product Type  | Primary antibodies |
| Applications  | WB/FC/ELISA        |
| Host / Source | Mouse              |
| Reactivity    | Human              |

### PRODUCT PROPERTIES

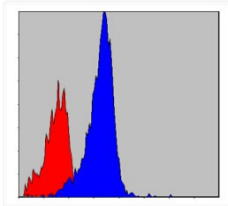
|                     |  |
|---------------------|--|
| Clonality           | Monoclonal   |
| Conjugation         | Unconjugated   |
| Purification        | Affinity purification  |
| Dilution Range      | WB 1:500-1:2000<br>FC 1:200-1:400<br>ELISA 1:10000   |
| Formulation         | Liquid in PBS containing 0.03% Sodium Azide, 0.5% BSA, 50% Glycerol.                           |
| Isotype             | IgG1   |
| Molecular Weight    | Calculated: 34kD   |
| Storage Instruction | Store at -20°C for up to 1 year from the date of receipt, and avoid repeat freeze-thaw cycles. |

### TARGET INFORMATION

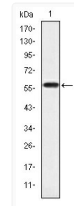
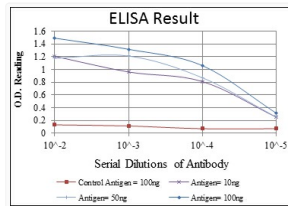
|             |   |
|-------------|---|
| Gene ID     | <a href="#">1399</a>  |
| Gene Symbol | <a href="#">CRKL</a>  |
| UniProt ID  | <a href="#">CRKL_HUMAN</a>  |
| Specificity | Crk-L Monoclonal Antibody detects endogenous levels of Crk-L protein. |

### ADDITIONAL INFORMATION

Note **STRICTLY FOR FURTHER SCIENTIFIC RESEARCH USE ONLY (RUO). MUST NOT TO BE USED IN DIAGNOSTIC OR THERAPEUTIC APPLICATIONS.**



Flow cytometric analysis of NIH/3T3 cells using Crk-L monoclonal antibody (blue) and negative control (red).



Western blot analysis using Crk-L monoclonal antibody against human Crk-L (AA: 100-303) recombinant protein.